

EASTMAN UPDATE

Progress Timeline

03



Decking installation (Area C)

10



Steel erection (Area B)

14



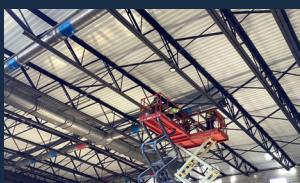
Site underground utility install

17



Concrete slab pour (Area A)

20



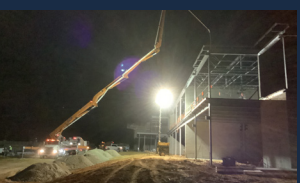
Exposed ductwork install (Area D)

23



Snow on the jobsite

30



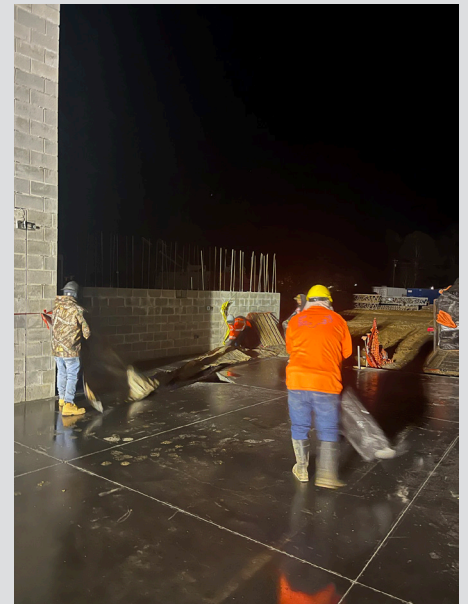
2nd floor slab pour (Area B)

STEEL, CONCRETE, AND COLD



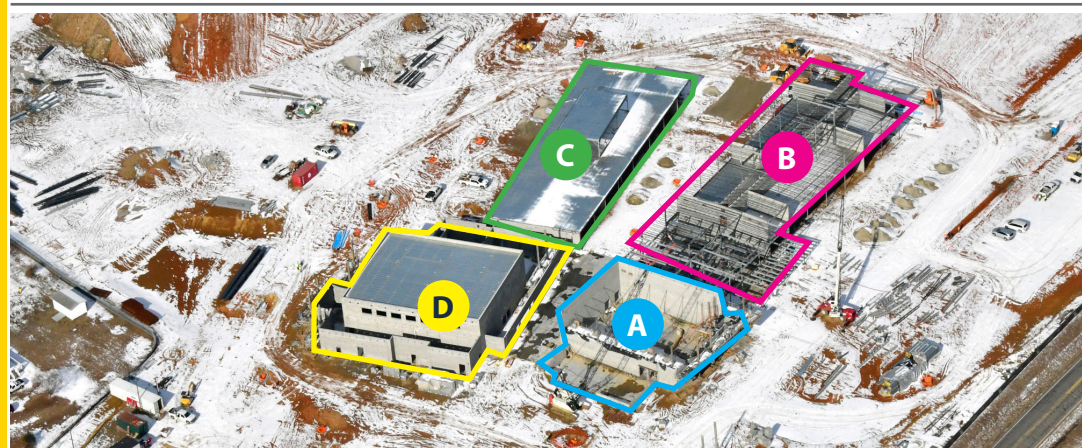
Structural steel in Area A commons

Even with the wintery weather, we have made great progress on the new Eastman School! Structural Steel continues to be the focus this month, and is progressing well. The gym (Area D) is fully enclosed, and we are starting to install mechanical ductwork. We also have poured several concrete slabs, including the second-floor of the classroom wing (Area B).



We insulated the freshly-poured concrete slab with blankets to protect it from the freezing temperatures.

BUILDING UPDATES



January 23, 2025

30 DAY CONSTRUCTION LOOK-AHEAD



- Water lines from Hwy 48 to building are being installed
- Sewer lines are being installed
- Steel is ongoing
- Roof decking is being installed
- Concrete slabs are ongoing